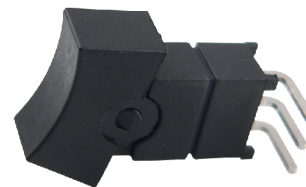



Feature :

SPDT
Right angle terminal

Application :

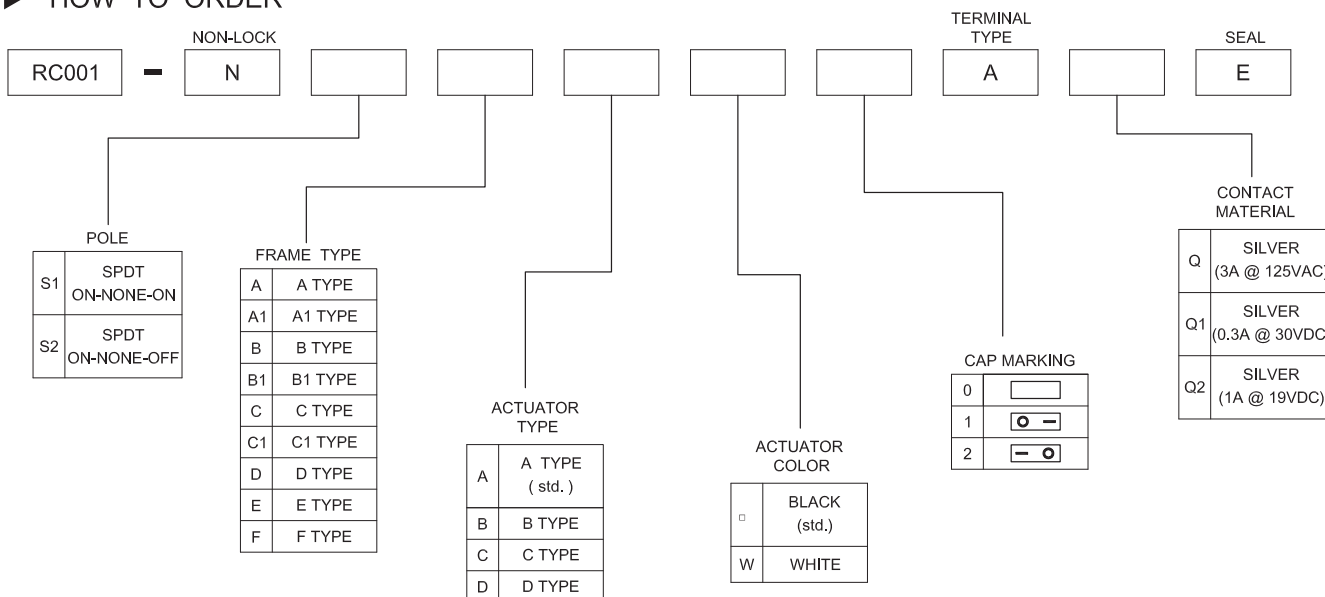
Consumer products
Instrumentation
Computer products
Communication equipment



SWITCH SPECIFICATIONS

POLE - POSITION	SPDT, ON - NONE - ON ; ON - NONE - OFF
CONTACT RATING	3Amps with resistive load @ 125VAC or 28VDC
CONTACT RESISTANCE	20 mΩ max. 1.5 V DC ; 100 mA , by Method of Voltage DROP
INSULATION RESISTANCE	1000 MΩ min. 500 V DC
DIELECTRIC STRENGTH	Breakdown is not Allowable ; 1000 V AC for 1 Minute
OPERATING FORCE	300 ± 100 gf
OPERATING LIFE	10,000 cycles
OPERATING TEMPERATURE RANGE	-40°C ~ 85°C
TOTAL TRAVEL	2.2 ± 0.3 mm

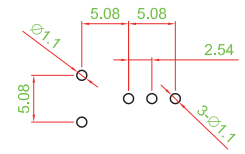
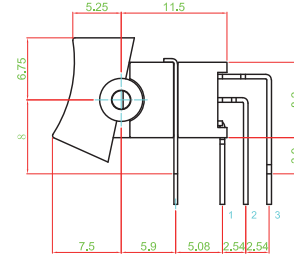
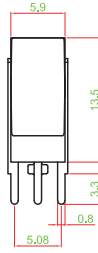
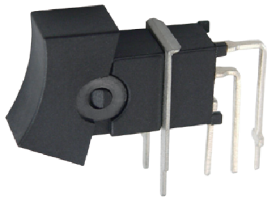
HOW TO ORDER



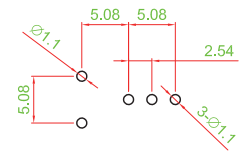
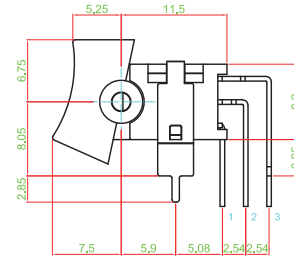
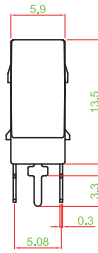
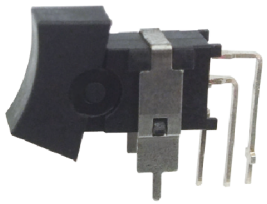


► DIMENSION

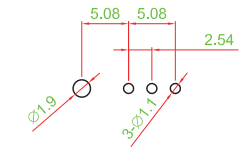
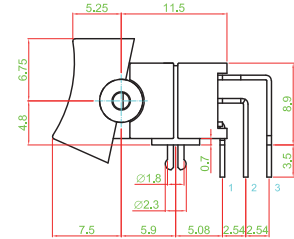
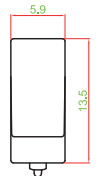
RC001-NS1AA0AQ1E



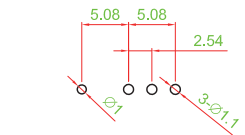
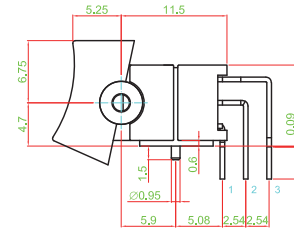
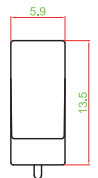
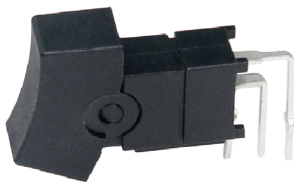
RC001-NS1A1A0AQ1E



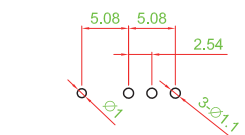
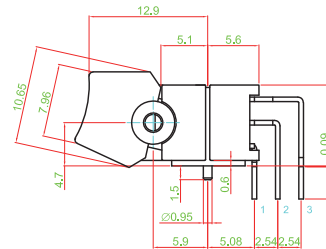
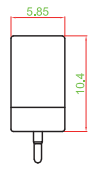
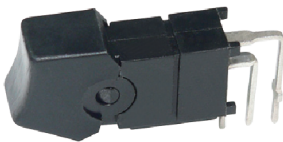
RC001-NS1BA0AQ1E



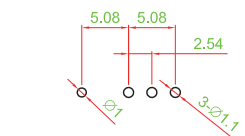
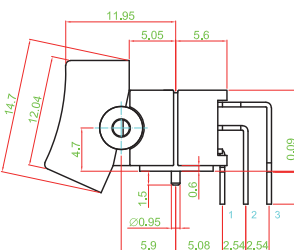
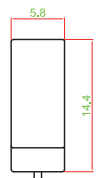
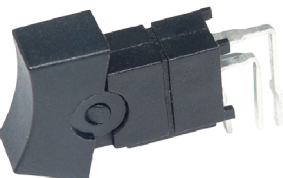
RC001-NS1B1A0AQ1E



RC001-NS1B1B0AQ1E



RC001-NS1B1C0AQ1E



TACT SWITCH

PUSH BUTTON SWITCH

LED TOUCH SENSOR SWITCH

5 DIRECTION NAVIGATION SWITCH WITH LED

MEMBRANE SWITCH

LED LIGHT BAR

SLIDE SWITCH

ROTARY SWITCH

ROCKER SWITCH

DETECT SWITCH

ENCODER

INTERRUPTER

MINIATURE MICRO SWITCH

TELEPHONE HOOK SWITCH

DOOR SWITCH

MINI SIZE SOCKET

KNOB

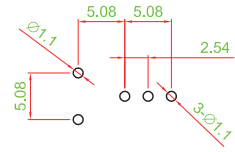
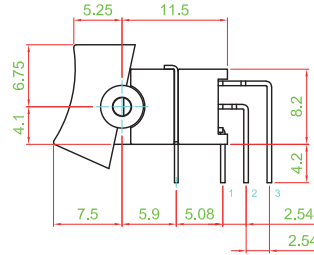
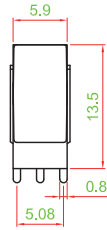
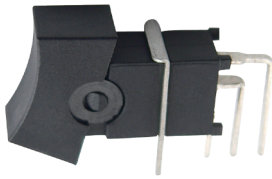
CAP SYMBOL



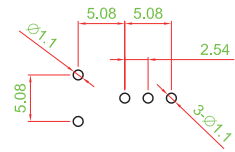
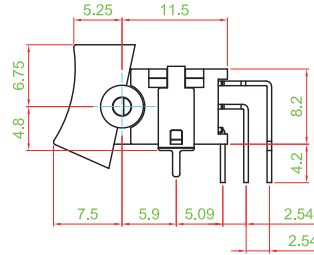
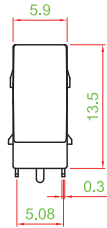
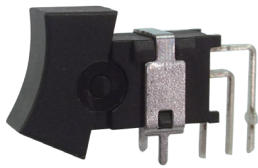
- TRACT SWITCH
- PUSH BUTTON SWITCH
- LED TOUCH SENSOR SWITCH
- 5 DIRECTION NAVIGATION SWITCH WITH LED
- MEMBRANE SWITCH
- LED LIGHT BAR
- SLIDE SWITCH
- ROCKER SWITCH
- DETECT SWITCH
- ENCODER
- INTERRUPTER
- MINIATURE MICRO SWITCH
- TELEPHONE HOOK SWITCH
- DOOR SWITCH
- MINI SIZE SOCKET
- KNOB
- CAP SYMBOL

► DIMENSION

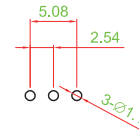
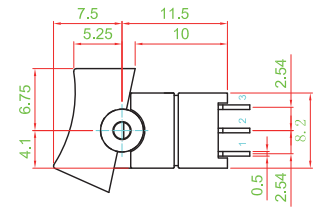
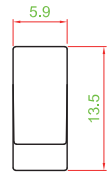
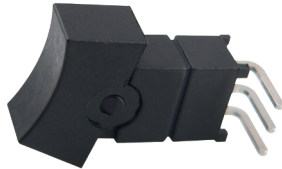
RC001-NS1CA0AQ1E



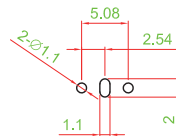
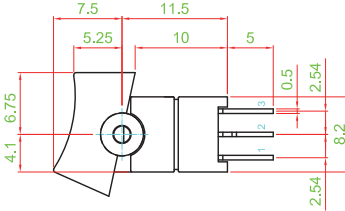
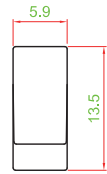
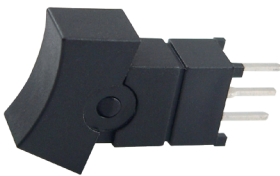
RC001-NS1C1A0AQ1E



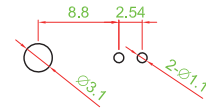
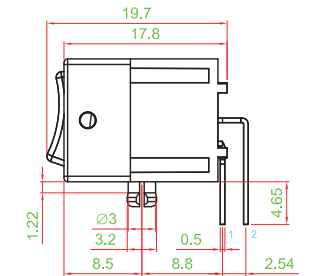
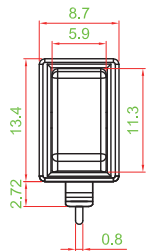
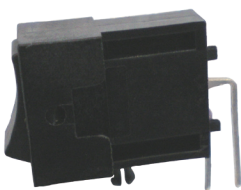
RC001-NS1DA0AQ1E



RC001-NS1EA0AQ1E



RC001-NS2FD0AQE



► CIRCUIT

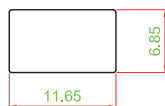


► PANEL MOUNTING

A-type actuator :



B-type actuator :



C-type actuator :



D-type actuator :

